

Knurled nuts steel and stainless steel, DIN 6303

Item description/product images



Description

Material:

Free-cutting steel 1.0718.

Stainless steel 1.4305.

Version:

Free-cutting steel, black oxidised.

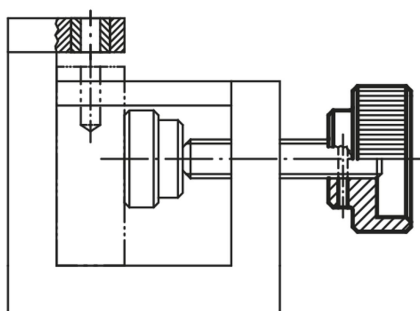
Stainless steel bright.

Drawing reference:

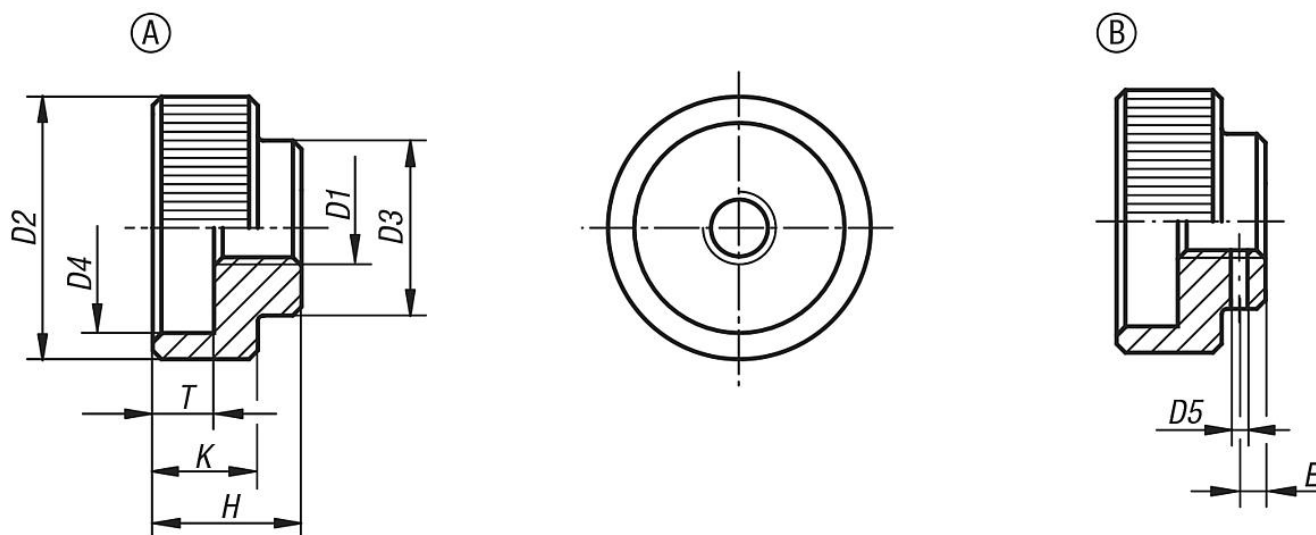
Form A: without pin hole

Form B: with pin hole

- Drill through and ream pin hole on assembly.



Drawings



Overview of items

Knurled nuts, steel and stainless steel, DIN 6303

Order No.	Form	Base material	D1	D2	D3	D4	D5 predrilled	E	H	K	T	suitable dowel pin ISO 2338
K0137.105	A	Free-cutting steel	M5	20	14	15	-	-	12	8	5	-
K0137.106	A	Free-cutting steel	M6	24	16	18	-	-	14	10	6	-
K0137.108	A	Free-cutting steel	M8	30	20	24	-	-	17	12	7	-
K0137.110	A	Free-cutting steel	M10	36	28	30	-	-	20	14	8	-

Knurled nuts steel and stainless steel, DIN 6303

Overview of items

Order No.	Form	Base material	D1	D2	D3	D4	D5 predrilled	E	H	K	T	suitable dowel pin ISO 2338
K0137.112	A	Free-cutting steel	M12	40	32	34	-	-	24	16	10	-
K0137.1052	A	Stainless steel	M5	20	14	15	-	-	12	8	5	-
K0137.1062	A	Stainless steel	M6	24	16	18	-	-	14	10	6	-
K0137.1082	A	Stainless steel	M8	30	20	24	-	-	17	12	7	-
K0137.1102	A	Stainless steel	M10	36	28	30	-	-	20	14	8	-
K0137.1122	A	Stainless steel	M12	40	32	34	-	-	24	16	10	-
K0137.205	B	Free-cutting steel	M5	20	14	15	1,4	2,5	12	8	5	1,5 M6X14
K0137.206	B	Free-cutting steel	M6	24	16	18	1,4	2,5	14	10	6	1,5 M6X16
K0137.208	B	Free-cutting steel	M8	30	20	24	1,9	3	17	12	7	2 M6X20
K0137.210	B	Free-cutting steel	M10	36	28	30	2,9	4	20	14	8	3 M6X28
K0137.212	B	Free-cutting steel	M12	40	32	34	3,9	4	24	16	10	4 M6X32