

## Magnets deep pot AlNiCo without fitting tolerance

### Item description/product images



### Description

**Material:**

Housing, steel.  
Magnetic core AlNiCo.

**Version:**

Housing, galvanized.

**Note:**

Shielded system. Diameter "D" without fitting tolerance. Fastening possibilities are pressing, shrink-fit or gluing.  
Deep pot magnets can be shortened by the dimension "H" with no loss of attracting force.

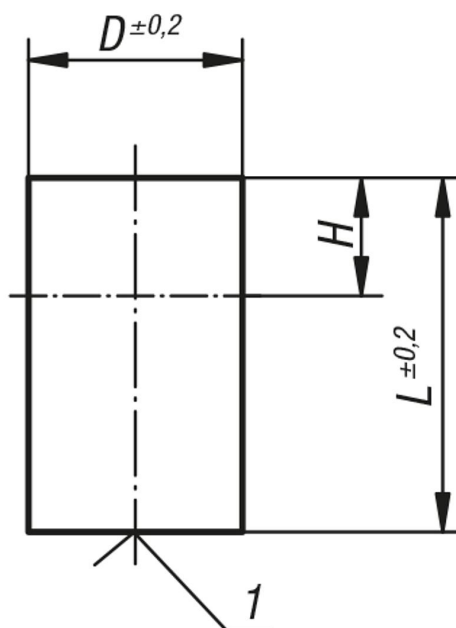
**Temperature range:**

max. 450°C.

**Drawing reference:**

1) magnetic face

### Drawings



### Overview of items

#### Magnets deep pot AlNiCo without fitting tolerance

Order No.	D	L	H	Magnetic force N
K0546.01	6	20	12	1,5
K0546.02	8	20	11	3,5
K0546.03	10	20	10	7

## Magnets deep pot AlNiCo without fitting tolerance

### Overview of items

Order No.	D	L	H	Magnetic force N
K0546.04	13	20	9	10
K0546.05	16	20	5	18
K0546.06	20	25	6	42
K0546.07	25	35	10	96
K0546.08	32	40	8	180
K0546.09	40	50	10	240