

## Magnets deep pot with pin AlNiCo

### Item description/product images



### Description

**Material:**

Housing, steel.  
Magnetic core AlNiCo.

**Version:**

Housing, galvanized.

**Note:**

Deep pot magnets with smooth pin, shielded system. The magnets can be shortened by the dimension "H" (to lengthen the pin) with no loss of attracting force.

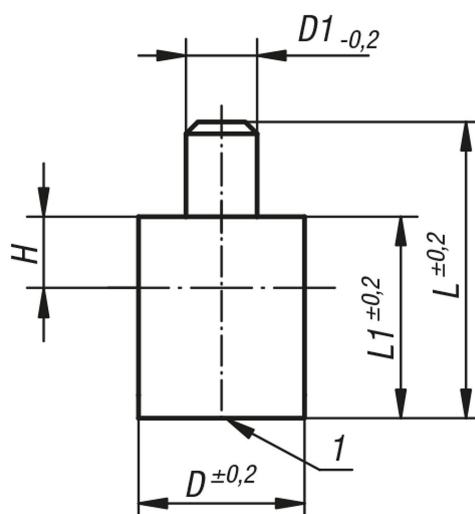
**Temperature range:**

max. 450°C.

**Drawing reference:**

1) magnetic face

### Drawings



### Overview of items

#### Magnets deep pot with pin AlNiCo

Order No.	D	D1	L	L1	H	Magnetic force N
K0547.01	6	3	28	20	2	1,7
K0547.02	8	3	28	20	3	4
K0547.03	10	4	28	20	6	8,5
K0547.04	13	4	28	20	7	12
K0547.05	16	5	28	20	5	20
K0547.06	20	6	33	25	6	50
K0547.07	25	8	45	35	5	115
K0547.08	32	10	50	40	3	200
K0547.09	40	15	70	50	5	240
K0547.10	50	18	85	60	2	420