

## Magnets deep pot

### Item description/product images



### Description

**Material:**

Housing, steel.  
Magnetic core AlNiCo.

**Version:**

Housing painted red.

**Note:**

Hard magnet in aluminium housing and steel jacket. Shielded system. Pot magnets are used for retaining, lifting and mounting in fixtures.  
Due to the painted surface, the diameter D can be up to +0.8 mm.

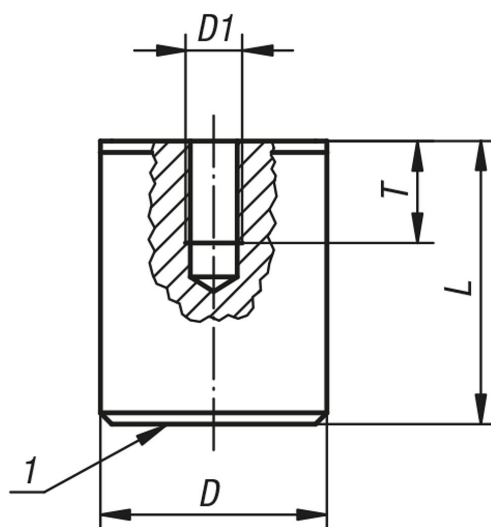
**Temperature range:**

max. 450°C.

**Drawing reference:**

1) magnetic face

### Drawings



### Overview of items

#### Magnets deep pot

Order No.	D	D1	L	T	Magnetic force N
K0557.01	17	M6	16	4	18
K0557.02	21	M6	19	5	28
K0557.03	27	M6	25	6	65
K0557.04	35	M6	30	9	115
K0557.05	65	M12	43	13	400