

Knurled screws low head steel and stainless steel, DIN 653

Item description/product images



Description

Material:

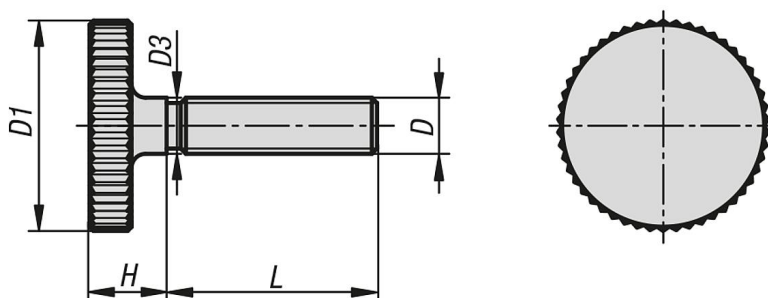
Steel or stainless steel (A 1).

Version:

Steel grade 5.8, bright;

Stainless steel, bright.

Drawings



Overview of items

Knurled screws low head, steel and stainless steel, DIN 653

Order No.	Main material	D	D1	D3	H	L
K1163.03X10	steel	M3	12	3	4,5	8
K1163.03X12	steel	M3	12	3	4,5	10
K1163.03X16	steel	M3	12	3	4,5	14
K1163.04X8	steel	M4	16	4	6,5	5
K1163.04X10	steel	M4	16	4	6,5	7
K1163.04X12	steel	M4	16	4	6,5	9
K1163.04X16	steel	M4	16	4	6,5	13
K1163.04X20	steel	M4	16	4	6,5	17
K1163.05X10	steel	M5	20	5	7	7
K1163.05X12	steel	M5	20	5	7	9
K1163.05X16	steel	M5	20	5	7	13
K1163.05X20	steel	M5	20	5	7	17
K1163.05X25	steel	M5	20	5	7	22
K1163.05X30	steel	M5	20	5	7	27
K1163.06X12	steel	M6	24	6	9	8
K1163.06X16	steel	M6	24	6	9	12
K1163.06X20	steel	M6	24	6	9	16
K1163.06X25	steel	M6	24	6	9	21
K1163.06X30	steel	M6	24	6	9	26
K1163.06X35	steel	M6	24	6	9	31
K1163.06X40	steel	M6	24	6	9	36
K1163.08X16	steel	M8	30	8	11	11
K1163.08X20	steel	M8	30	8	11	15
K1163.08X25	steel	M8	30	8	11	20
K1163.08X30	steel	M8	30	8	11	25
K1163.08X35	steel	M8	30	8	11	30
K1163.08X40	steel	M8	30	8	11	35
K1163.10X20	steel	M10	36	10	14	14
K1163.10X25	steel	M10	36	10	14	19

Knurled screws low head steel and stainless steel, DIN 653

Overview of items

Order No.	Main material	D	D1	D3	H	L
K1163.10X30	steel	M10	36	10	14	24
K1163.10X35	steel	M10	36	10	14	29
K1163.10X40	steel	M10	36	10	14	34
K1163.032X10	stainless steel	M3	12	3	4,5	8
K1163.032X12	stainless steel	M3	12	3	4,5	10
K1163.032X16	stainless steel	M3	12	3	4,5	14
K1163.042X8	stainless steel	M4	16	4	6,5	5
K1163.042X10	stainless steel	M4	16	4	6,5	7
K1163.042X12	stainless steel	M4	16	4	6,5	9
K1163.042X16	stainless steel	M4	16	4	6,5	13
K1163.042X20	stainless steel	M4	16	4	6,5	17
K1163.052X10	stainless steel	M5	20	5	7	7
K1163.052X12	stainless steel	M5	20	5	7	9
K1163.052X16	stainless steel	M5	20	5	7	13
K1163.052X20	stainless steel	M5	20	5	7	17
K1163.052X25	stainless steel	M5	20	5	7	22
K1163.052X30	stainless steel	M5	20	5	7	27
K1163.062X12	stainless steel	M6	24	6	9	8
K1163.062X16	stainless steel	M6	24	6	9	12
K1163.062X20	stainless steel	M6	24	6	9	16
K1163.062X25	stainless steel	M6	24	6	9	21
K1163.062X30	stainless steel	M6	24	6	9	26
K1163.062X35	stainless steel	M6	24	6	9	31
K1163.062X40	stainless steel	M6	24	6	9	36
K1163.082X16	stainless steel	M8	30	8	11	11
K1163.082X20	stainless steel	M8	30	8	11	15
K1163.082X25	stainless steel	M8	30	8	11	20
K1163.082X30	stainless steel	M8	30	8	11	25
K1163.102X20	stainless steel	M10	36	10	14	14
K1163.102X25	stainless steel	M10	36	10	14	19
K1163.102X30	stainless steel	M10	36	10	14	24
K1163.102X40	stainless steel	M10	36	10	14	34